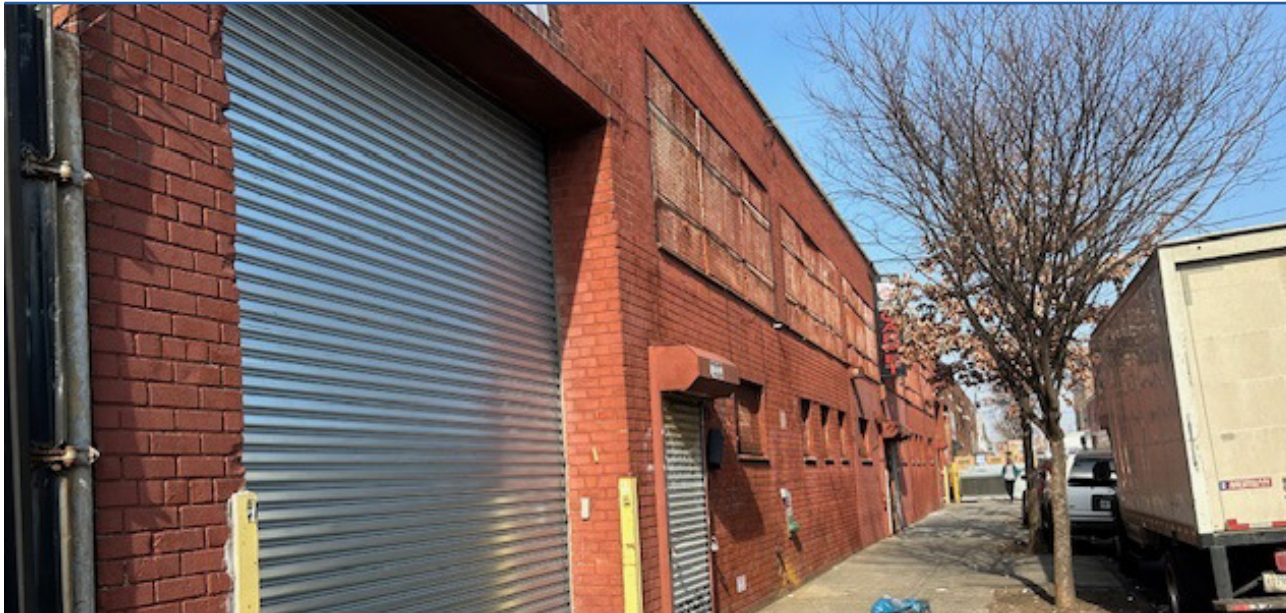


596 Berriman Street Brooklyn, NY 11208

www.kaplonbelo.com



**11,000 SQFT HIGH CEILING
WAREHOUSE AVAILABLE -
EAST NY BROOKLYN**

PROPERTY

Building Size: 14,000 SqFt

Available Space: 11,000 SqFt

Block/Lot: 4499-19

Zoning: M1-1

BUILDING FEATURES

Loading: 1 Drive In Door (14')

Ceiling Height: 17' Clear, 18' to Deck

Heating: Gas

Electric: Three Phase

Sprinkler: Wet System

Bathrooms: 4

Lease Price: Upon Request

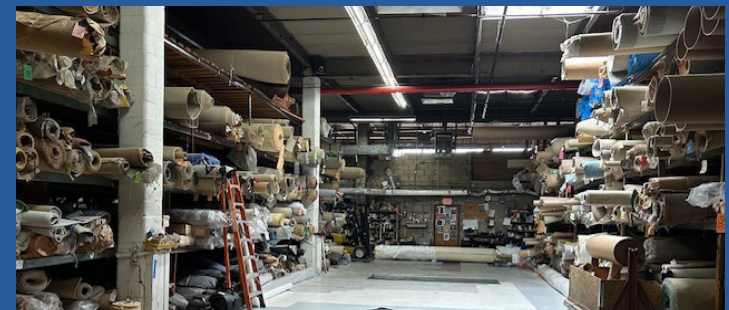
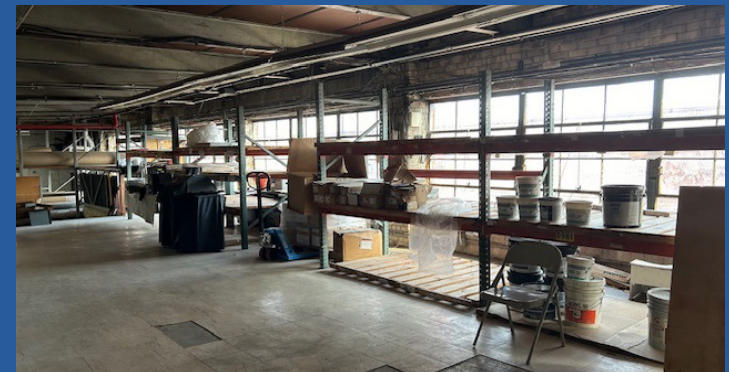
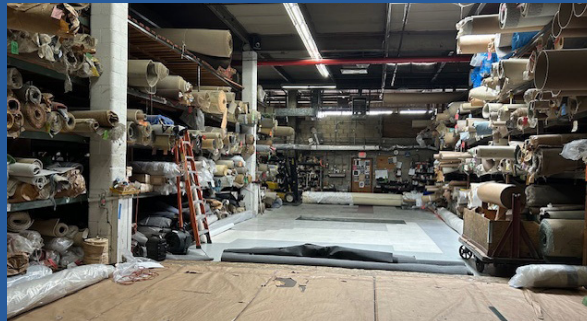


Listing subject to errors, omissions, change of price or other conditions, prior sale, rent and withdrawal without notice. Dimensions are approximate.

Exclusive Agent · Matthew Kaplon

(718) 392-3456 x 116 · mk@kaplonbelo.com

PROPERTY

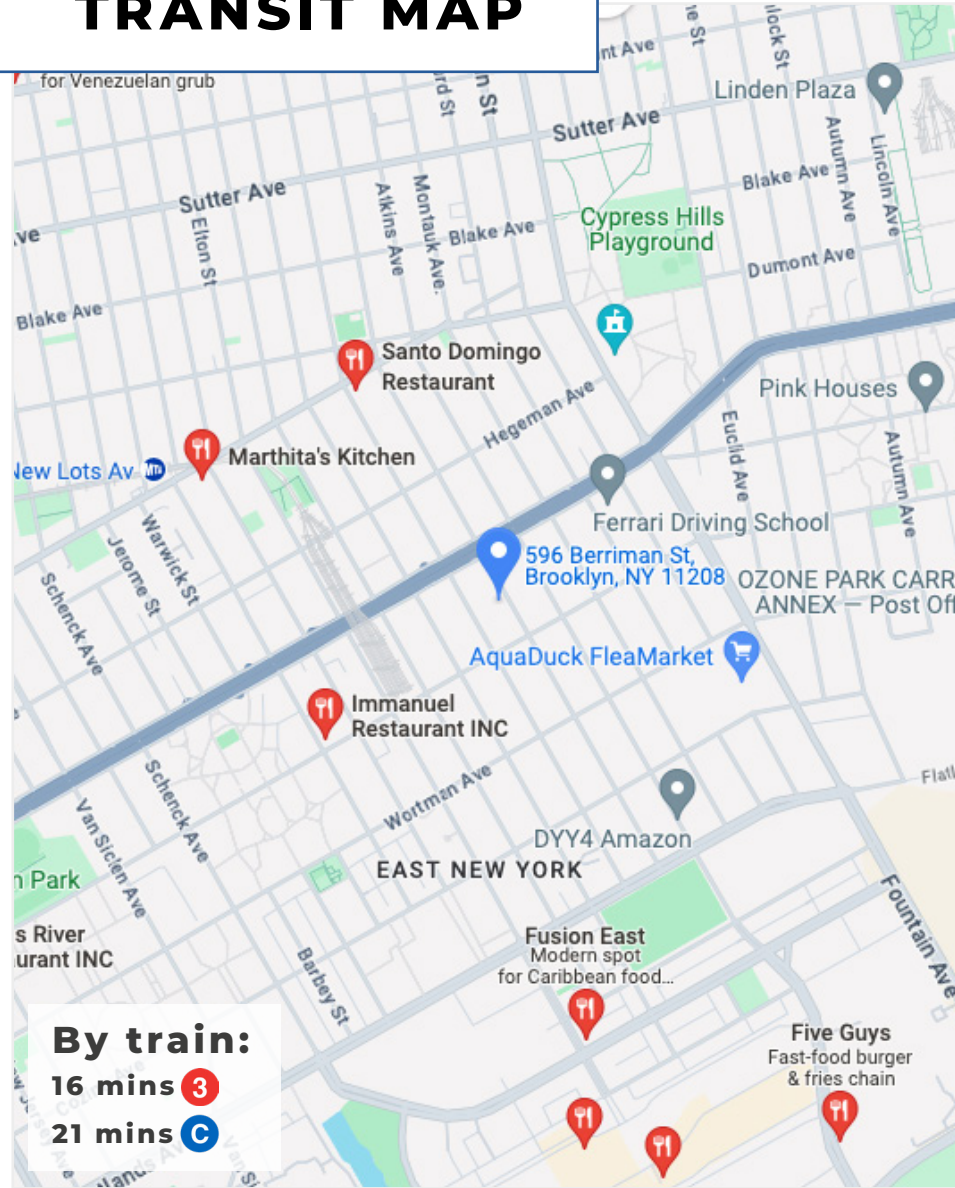


Listing subject to errors, omissions, change of price or other conditions, prior sale, rent and withdrawal without notice. Dimensions are approximate.

Exclusive Agent · Matthew Kaplon

(718) 392-3456 x 116 · mk@kaplonbelo.com

TRANSIT MAP



TAX MAP



Listing subject to errors, omissions, change of price or other conditions, prior sale, rent and withdrawal without notice. Dimensions are approximate.